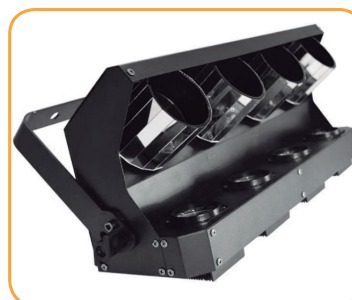


■ TWS-MSZP40 ZIPPO CREE LED RGBW



ESPECIFICACIONES

- 1.Voltage:AC100-240V 50/60Hz
- 2.Power:100W
- 3.Light Source:4 pcs RGBW 4in1 12W Cree LED
- 4.Channel: 1/10Channel
- 5.4 operation modes: Automatic running, DMX,sound active, master/slave
- 6.Adjustable strobe speed
- 7.LED display
- 8.Light size:51.5*14*23CM
- 9.Weight:5.1KG

RGBW 4IN1 Four Barrel